

Rayle Lines

Member Newsletter



November 2023

The Official Newsletter of Rayle Electric Membership Corporation

Operation Round Up awards \$22,600 in grants to local organizations

The Rayle EMC Foundation has allocated \$22,600 to support six community initiatives as part of its Operation Round Up program. At its recent quarterly meeting, the co-op's Foundation Board designated charitable grants to the following local organizations:



- **Special Olympics Georgia Inc., all of Georgia:** \$1,500 to cover the cost of expenses for approximately 19 athletes to participate in a weekendlong state competition and receive free health care screenings and wellness education.
- **Lexington Volunteer Fire Department, Oglethorpe County:** \$5,000 to cover the cost of upgraded equipment to include safety lights, gate valve, nozzles, adapters, hoses and ladders.
- **Second Harvest Inc., Greene and Taliaferro counties:** \$4,000 for the School Backpack program that provides weekend backpack meals, every week during the school year, to elementary school children from low-income families in Taliaferro and Greene counties.

Continued on page 20B



Representatives of the Lexington Volunteer Fire Department receive a check from Richard Heard. From left: Chris Wren, Kim Bradford, Richard Heard, Douglas Spencer, Ronnie Joines and Mark Bridges.



Director of Member Services Richard Heard, left, presents \$4,000 check to Bill Bonnington of Second Harvest Inc.

Operation Round Up grants, *Continued from page 20A*

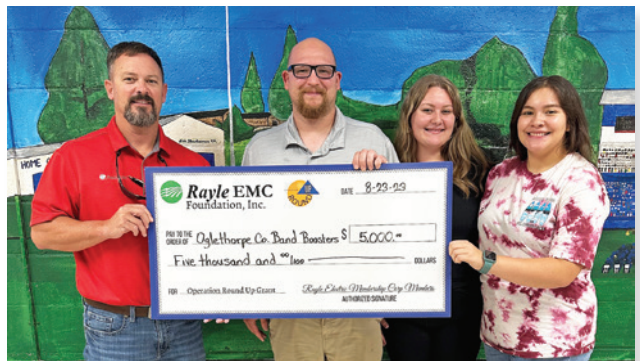
- **Pleasant Hill Volunteer Fire Department, Oglethorpe County:** \$4,600 for equipment needed to outfit Rescue 5 and Engine 5. This equipment includes a K-12 saw, carbide blades, gloves, tool bags, hand tool sets, gated valve, flashlights, batteries, chargers and an impact driver.
- **Adventure Bags Inc., Greene and Morgan counties:** \$2,500 to help with the cost of supplies to place in bags given to children experiencing trauma beyond their control. The items include hygiene supplies, overnight essentials and comfort items for those children.
- **Oglethorpe County High School Band Boosters, Oglethorpe County:** \$5,000 to purchase essential props, equipment, uniforms and instrument maintenance for the marching band program.

Operation Round Up is a charitable program supporting nonprofit organizations that help meet the health, safety, educational or recreational needs of the community. Funding is made possible when members voluntarily “round up” their monthly electric bill to the next whole dollar. Individual members contribute an average of about 50 cents a month.

If you are a Rayle EMC member and participate in Operation Round Up, we thank you for your generosity. Operation Round Up is tax-deductible, and additional contributions can be made by calling or visiting your local Rayle EMC office. Operation Round Up’s sole purpose is to improve the quality of life for those in our community.



Richard Heard of Rayle EMC, left, presents \$4,600 check to Chief AJ Wiles and Lt. Russell Skinner of the Pleasant Hill Volunteer Fire Department.



Director of Member Services Richard Heard, left, presents check to Oglethorpe County High School Band Director Lee Jones, Kendall McCurdy and April Bridges.

Energy Efficiency *Tip of the Month*



The holiday season is upon us, and that means we'll be using more energy in the kitchen! When possible, cook with smaller countertop appliances instead of the stovetop or oven. Smaller appliances like slow cookers, air fryers and Instant Pots consume less energy.

When using the oven or stovetop, match the size of the pot to the heating element and place a lid over the pot while cooking. The food will cook faster, and you'll use less energy.

Source: www.energy.gov



Right-of-way program keeps you connected

The first time many people encounter the term “right-of-way” is in a driver’s manual or on a driver’s license test. It brings to mind something you have (or yield) when you’re behind the wheel of a motor vehicle.

But in the electric co-op world, right-of-way (ROW) takes on an important alternate meaning. It refers to the corridor or path an electric line follows, either along a road or through the woods.

Trees and branches that are downed by storms are a primary cause of power outages. Co-ops across Georgia have developed aggressive right-of-way maintenance programs, routinely trimming vegetation near power lines that could become a problem. Storms still may bring down branches or trees, but the trimmed-back vegetation is far enough from power lines that it is much less likely to fall across them.

“A good right-of-way program reduces outages a lot,” says Harry Reeves, Georgia EMC’s Vice President of training, education and safety. “It also makes troubleshooting a lot easier.”

Trees along a utility ROW increase the possibility of power outages and blinks. They also can delay power restoration after storms because fallen trees and debris must be cleared before crews can gain access to damaged poles or lines.

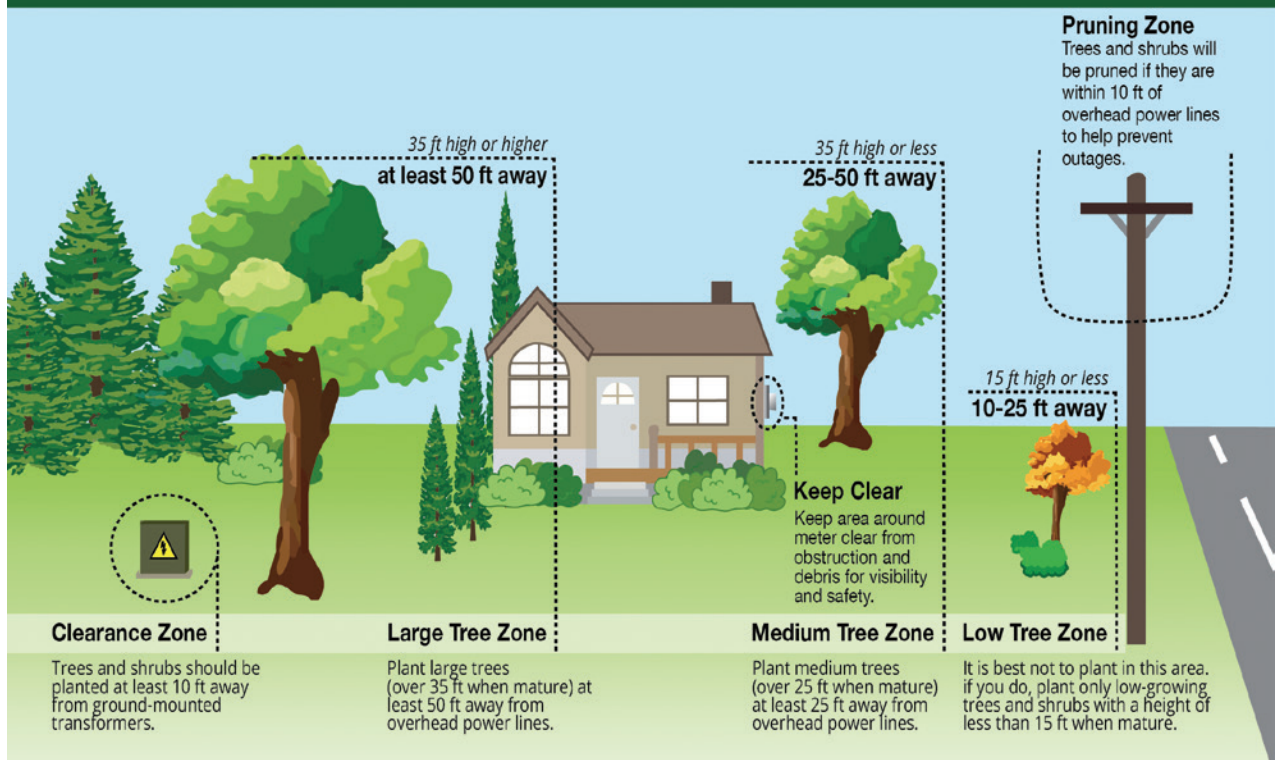
Large trees around utility rights-of-way pose a safety hazard by providing children an opportunity to play near power lines. Power lines can carry up to 14,400 volts, and an energized tree branch is extremely dangerous—even deadly. When a tree limb comes in contact with a power line, someone touching or climbing the tree could be shocked or even electrocuted. It also can produce a spark, which can start a fire, especially if the area is very dry.

Each electric cooperative member agrees in the membership application to grant the cooperative a right-of-way easement, giving permission to cut and keep clear all trees within a set distance of primary power lines, secondary and service lines.

The distance allowed for clearing vegetation varies
Continued on page 20D

RIGHT TREE, RIGHT PLACE!

Before planting new trees to improve the look of your yard, you will need to keep a few things in mind.



Happy Thanksgiving!

May the blessings of this Thanksgiving fill your heart and home with happiness! We hope this Thanksgiving holiday will be a joyous time for you and your family.

All Rayle EMC offices will be closed on Thursday and Friday, Nov. 23-24, so our employees can spend time with their families.



Apple Pound Cake

- 1-1/2 cups vegetable oil
- 2 cups sugar
- 3 eggs
- 3 cups self-rising flour
- 1 teaspoon cinnamon
- 1 teaspoon vanilla extract
- 3 medium apples (any variety), diced, peeled
- 1-1/2 cups chopped nuts (pecans or walnuts)



ISTOCK.COM / IAMTHATIAM

Preheat oven to 350 degrees. Grease and flour Bundt pan. Cream together oil, sugar and eggs. Blend in flour, cinnamon and vanilla extract. Fold in apples and nuts. Pour into prepared Bundt pan. Bake 1 hour or until cake tests done. Cool 15 minutes in pan before removing.

Right-of-way program, *Continued from page 20C*

by co-op, from 15 feet to 30 feet on each side of a primary power line, says Rayle EMC Manager Tony Griffin. The clearing cycle ranges from five to seven years. Some co-ops use their own employees to do right-of-way work, while others hire contract crews.

Proper clearing consists of removing trees, mowing underbrush, controlling vegetation growth and trimming limbs that extend into the right-of-way.

Many times, trees that are outside of the allowed cutting area of the ROW are responsible for outages. The

trees and/or tree limbs are not within the ROW, but the trees are tall enough to strike the wires when they fall.

If you believe that a tree on your property poses a threat to a power line, call Rayle EMC. If it is determined that the tree is a danger and could strike the wires in falling, it could be removed at no cost to you.

In addition, when planting a tree in your yard, keep in mind the tree's size at maturity. The larger the full-grown tree will be, the farther it needs to be from a power line.